

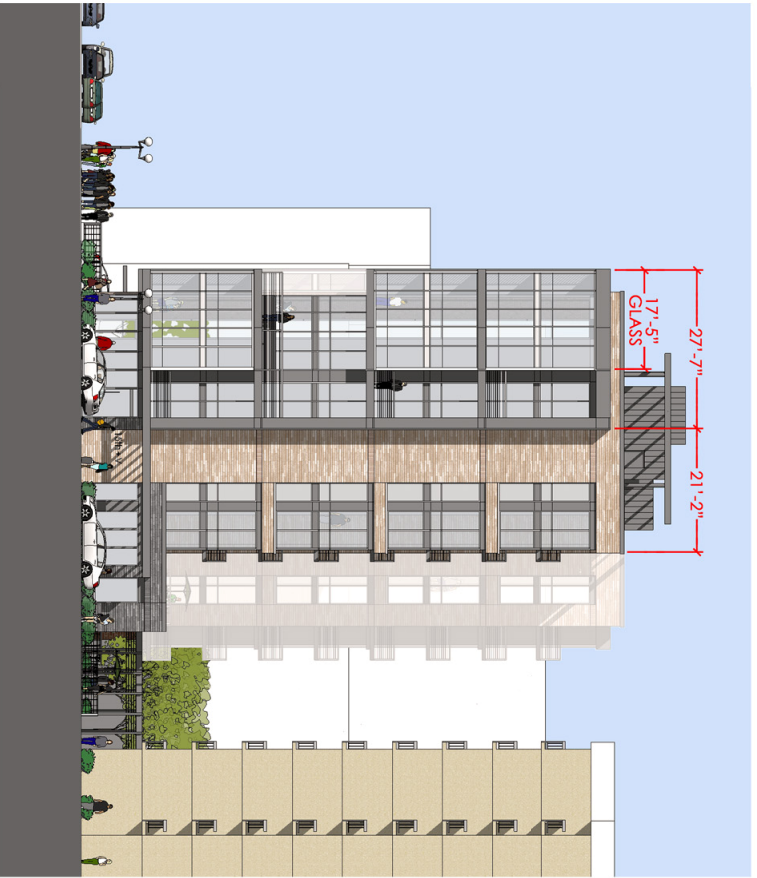
JAIR LYNCH DEVELOPMENT PARTNERS

V ST LOT RESIDENTIAL
WASHINGTON, DC

HPRB SUBMISSION | PRESENTED BY WDG ARCHITECTURE | NOVEMBER 2011



WDG



Previous Design
Glazing / Solid Ratio = 52%



Revised Design
Glazing / Solid Ratio = 45%

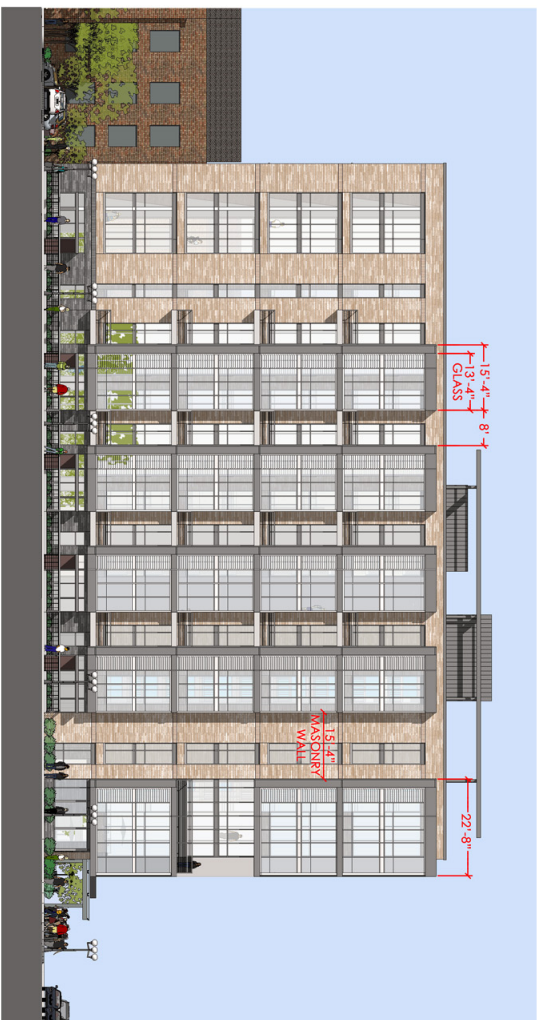




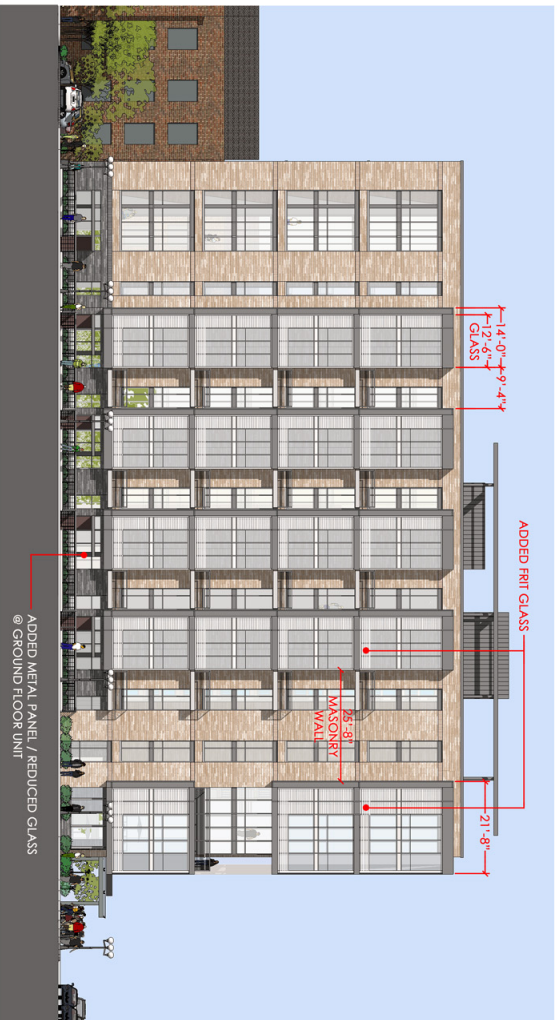
JAIR LYNCH DEVELOPMENT PARTNERS
WDG Architecture PLLC

V St Lot Apartments
15th St NW and V St NW, Washington, DC

Perspective



Previous Design



Revised Design



JAIR LYNCH DEVELOPMENT PARTNERS
WJDG Architecture PLLC

V St Lot Apartments
15th St NW and V St NW, Washington, DC

North Elevation - Design Comparison